

These are historical aerial photographs of the Lake Pinehurst region from 1950 to 2010, courtesy of Moore County.

<http://mooregisweb.moorecountync.gov/HistoricalImagery/MooreMaps.html>

The current street / property map has been overlaid on each picture so you can figure out where you are, and what you're looking at.

That said, many landmarks in the underlying photographs have changed over time. What is now Lakeview Condo's and Lake Point Villas used to be one of the largest dairy farms in NC. Tuft's Point was a Girl Scout camp, accessible only via a walking trail from the Village. Over half of what we now call Lake Pinehurst was little more than a series of ponds connected with a slow flowing stream. Oh, and I almost forgot, the damns have been moved....a few times.

1950

#5 wasn't built until 1961, and none of the streets which are overlaid here were built until the early 80's. So while the modern-day outline of everything is shown, there's no sign of anything other than topography in the underlying photo.

Note the absence of the ponds

Note the absence of any dams



1966



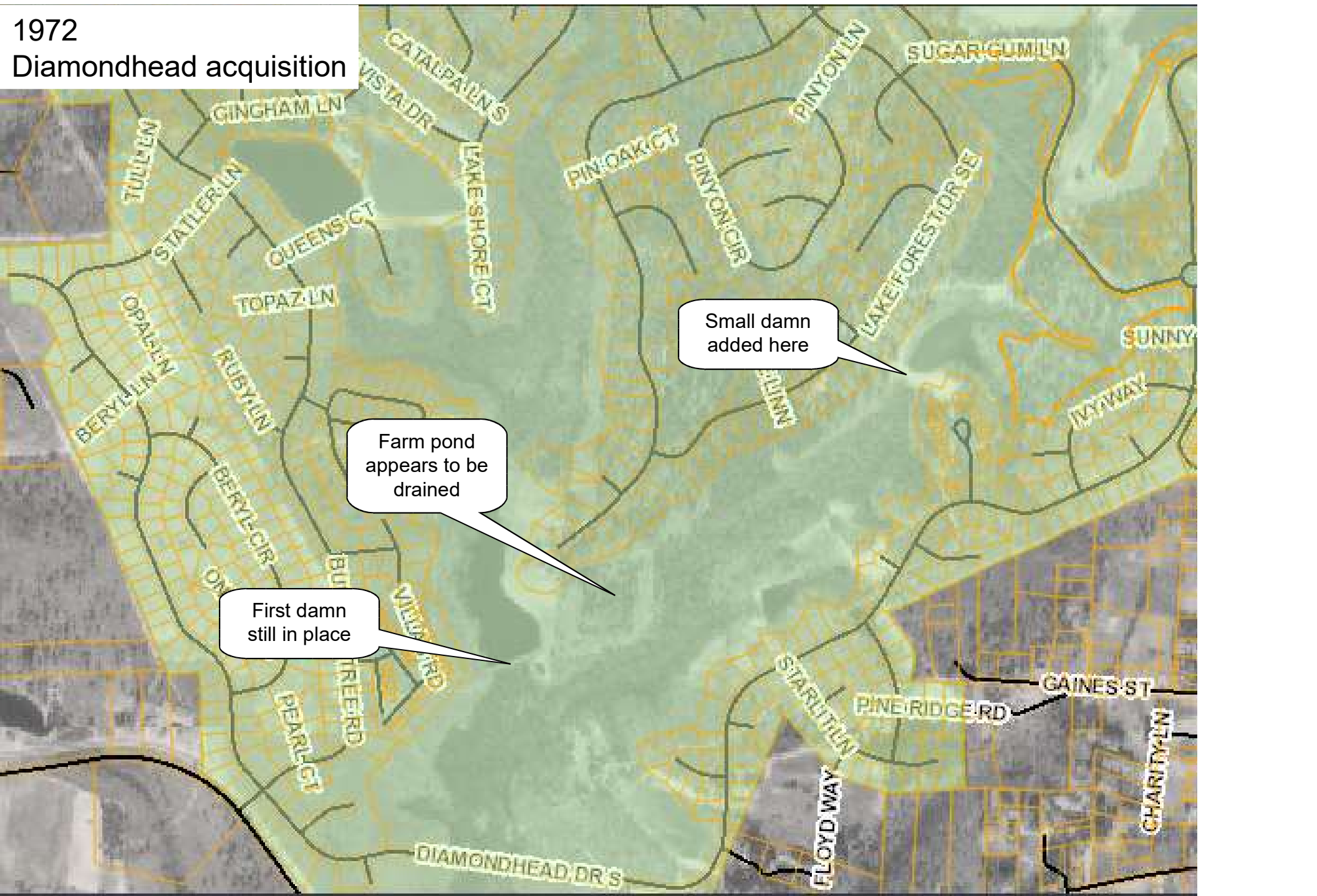
The first pond is clearly visible

#5 fairways are much easier to see now

The original damn at Tufts Point

The Tufts "farm pond"

1972  
Diamondhead acquisition



Small damn  
added here

Farm pond  
appears to be  
drained

First damn  
still in place

CATALPA LN'S  
VISTA DR

GINGHAM LN

SUGAR GUM LN

TULL LN

STATLER LN

QUEENS CT

LAKE SHORE CT

PIN OAK CT

PINYON CIR

PINYON LN

TOPAZ LN

LAKE FOREST DR SE

SUNNY

OPALE LN

RUBY LN

BRUNN

IVYWAY

BERYL CIR

BUT  
TREE RD

First damn  
still in place

VILVA RD

STARLIT LN

PINE RIDGE RD

GAINES ST

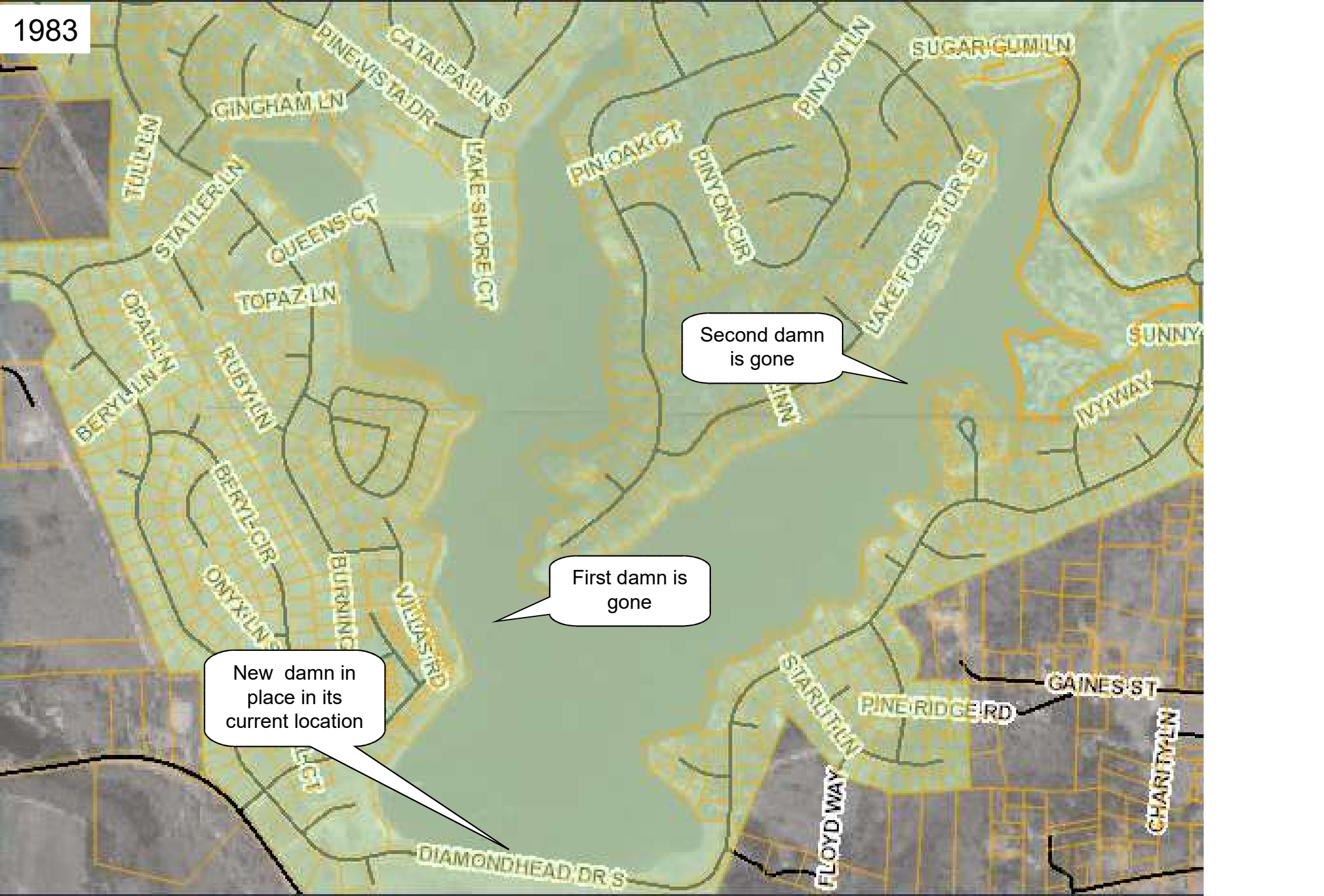
PEARL CT

FLOYD WAY

CHARITY LN

DIAMONDHEAD DR'S

1983



New damn in place in its current location

First damn is gone

Second damn is gone

1988



The second pond is more obvious in this image, perhaps they raised the damn a bit.

2003

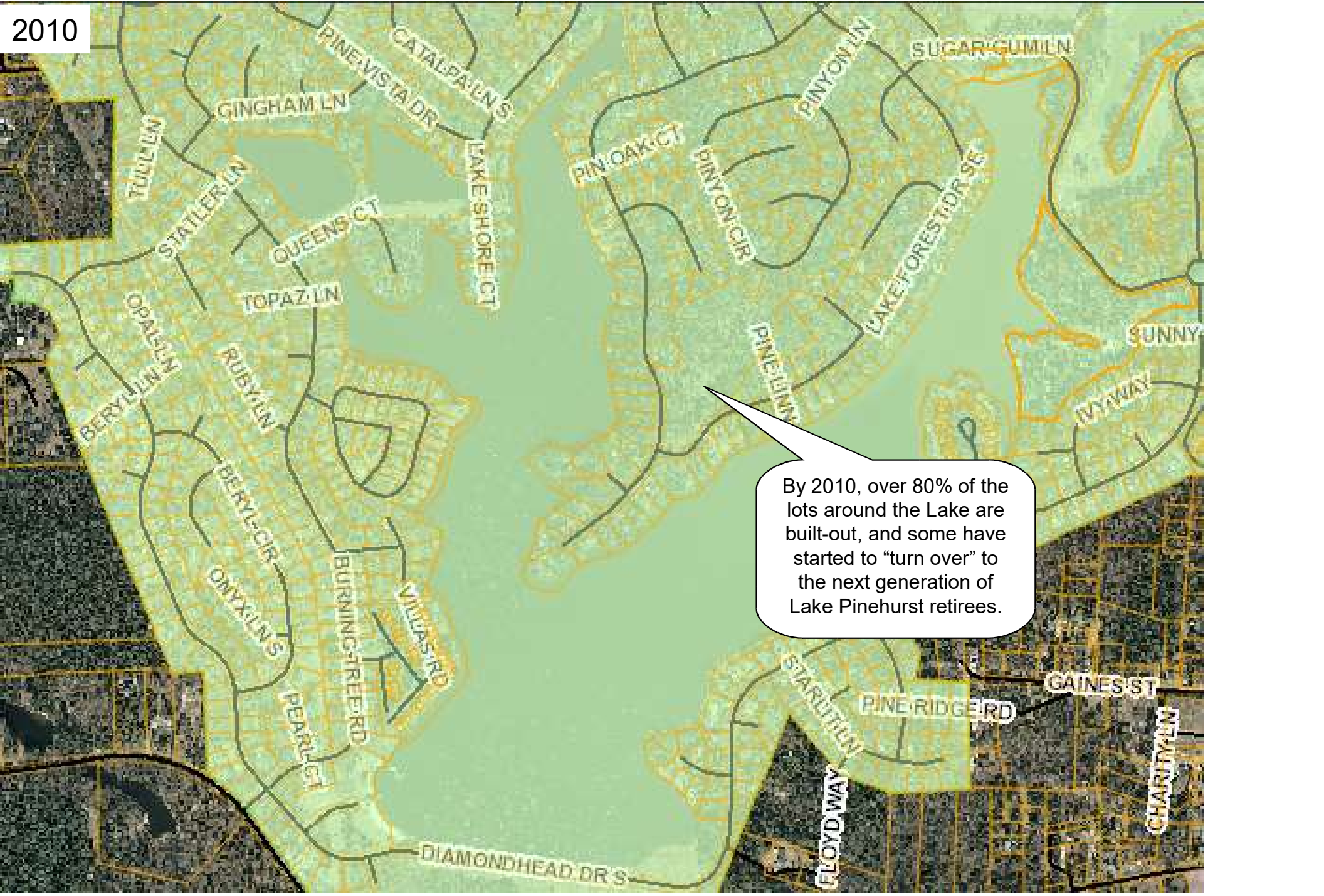


Not much changes between 1998 and 2003, other than a heck of lot of houses get built around the Lake.

Pinemere Phase III filled in Lake Forest Drive SW between Phase I and St. Andrews.

Pinemere Phase II filled in Lake Forest Drive SE between Phase I and St. Andrews.

Pinemere Phase I came out Lake Forest Drive SE, all the way to "Tufts Point".



2010

By 2010, over 80% of the lots around the Lake are built-out, and some have started to "turn over" to the next generation of Lake Pinehurst retirees.